



Florida Department of
TRANSPORTATION

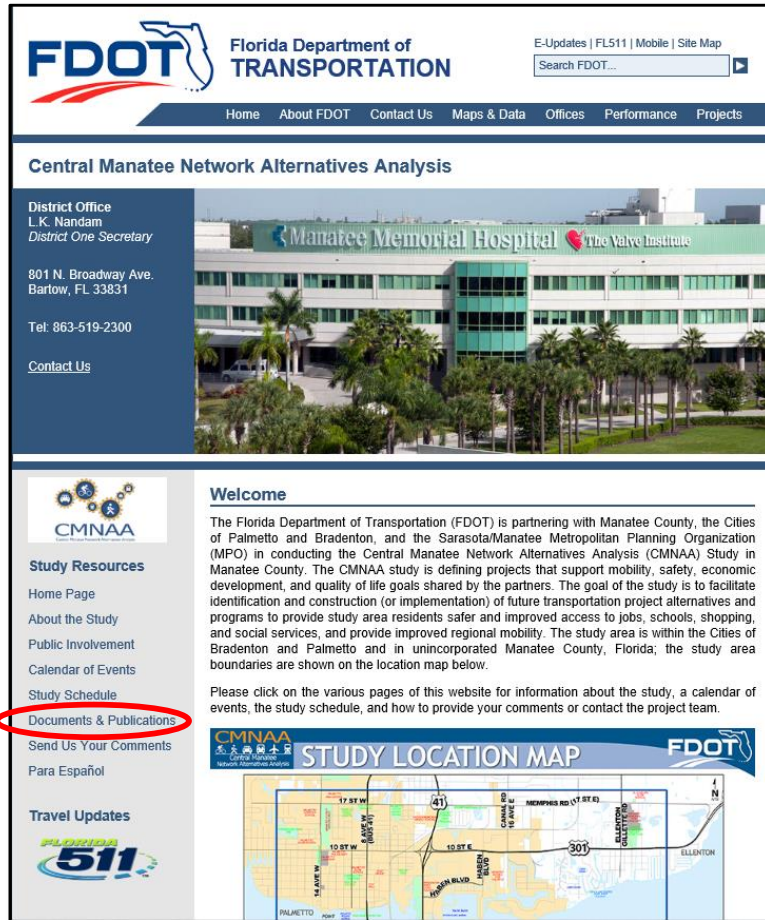
Bradenton Palmetto Connector Fall 2019 Update

Jennifer Marshall, PE
District 1 Environmental Management Office

The Florida Department of Transportation may adopt this planning product into the environmental review process, pursuant to Title 23 U.S.C. § 168(4)(d) or the state project development process.

Central Manatee Network Analysis

- Finalized and posted to website May 2019



Project website:

www.swflroads.com/study/CMNAA/

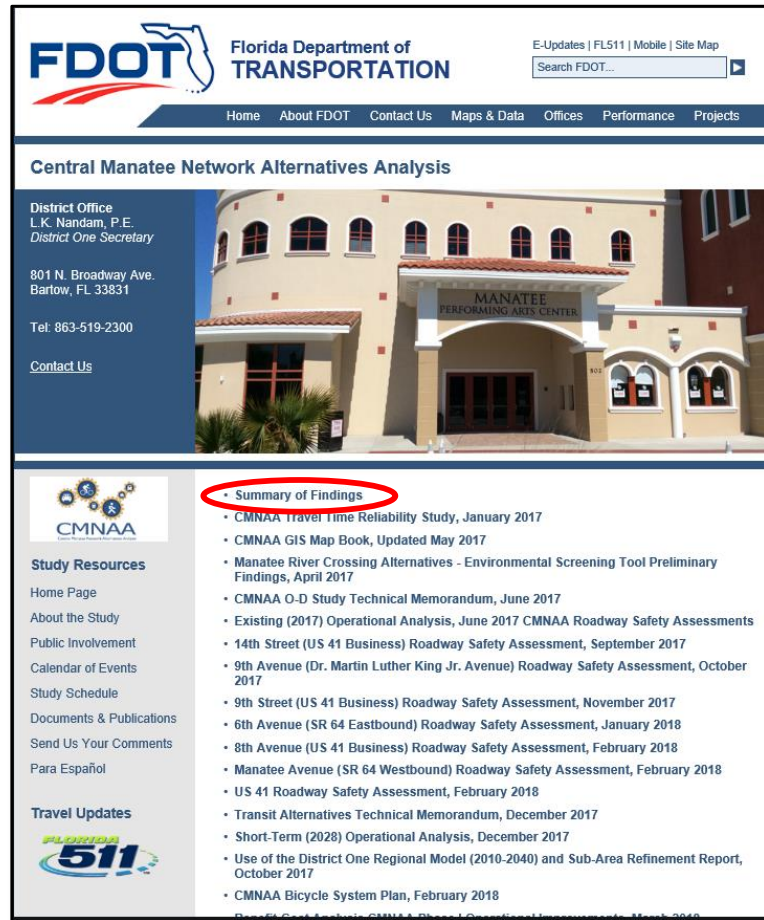


Link to document:

Documents & Publications

Central Manatee Network Analysis

- Finalized and posted to website May 2019



Project website:

www.swflroads.com/study/CMNAA/



Link to document:

Documents & Publications



Primary Document:

Summary of Findings

Central Manatee Network Analysis

- Projects Recommended:

Financial ID	Project Name	Fiscal Year
442630-1	DeSoto Bridge Replacement Study	2022/2023
444807-1	Traffic Operations Improvements in Downtown Bradenton	2019/2020
444843-1	Bradenton Palmetto Connector Study	2019/2020
444857-1	Palmetto Trails Network Study	2019/2020

Bradenton-Palmetto Connector Study

- **Phase 1: Alternative Corridor Evaluation (ACE)**
 - PD&E Manual, Part 1, Chapter 4
 - Evaluate all **corridors** from the Central Manatee Study
 - May incorporate new **corridors**
 - Will recommend 2-3 **corridors** to move into PD&E study phase
- **Phase 2: Project Development & Environment (PD&E Study)**
 - Detailed evaluation of **alignment alternatives located within the corridors** recommended from ACE
 - Will recommend one preferred alignment alternative to move into design phase

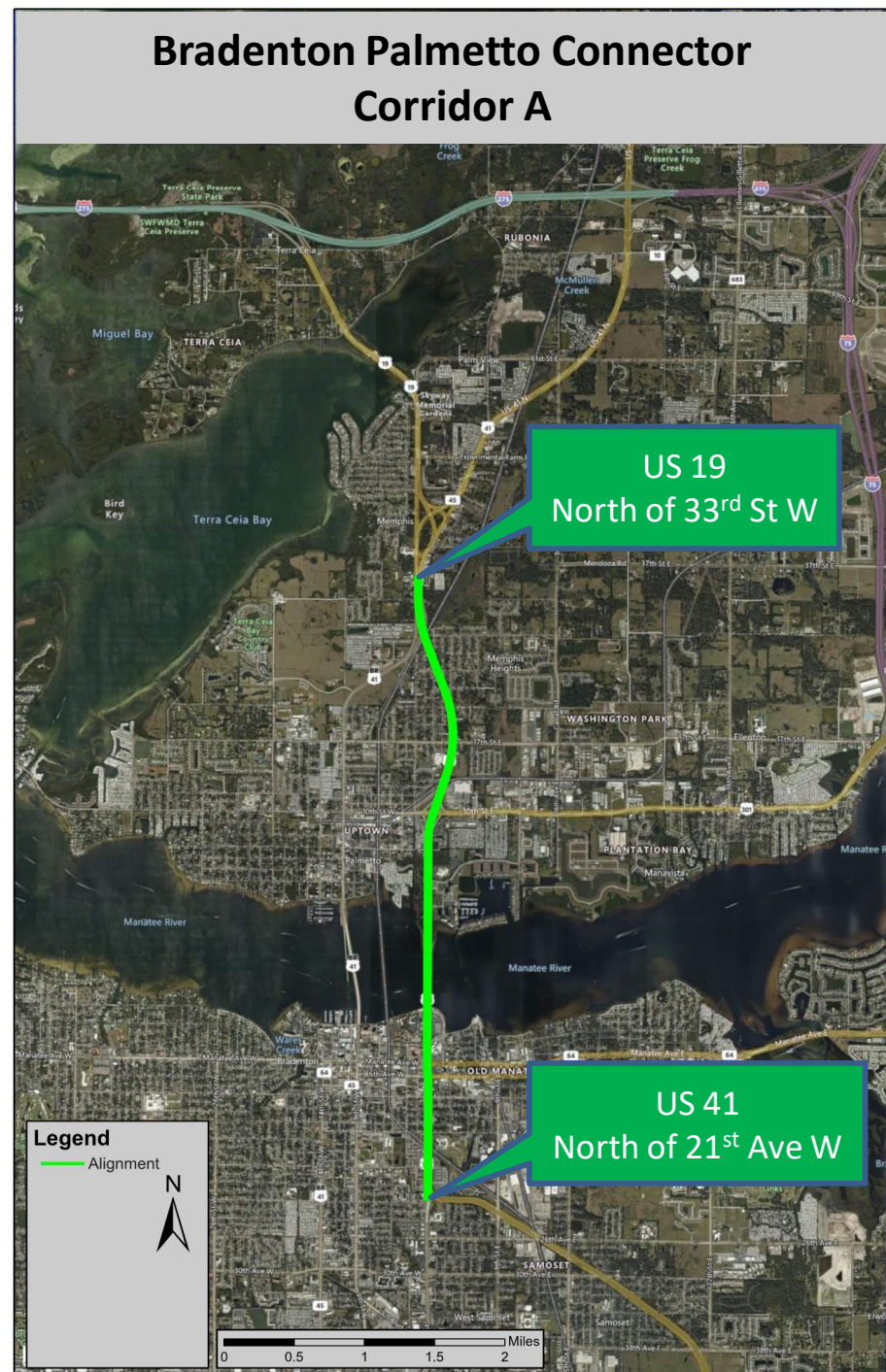
Preliminary Corridors

Corridor A

- From **US 19 north of 33rd St W** to **US 41 north of 21st Ave W**
- DeSoto Bridge included in the corridor



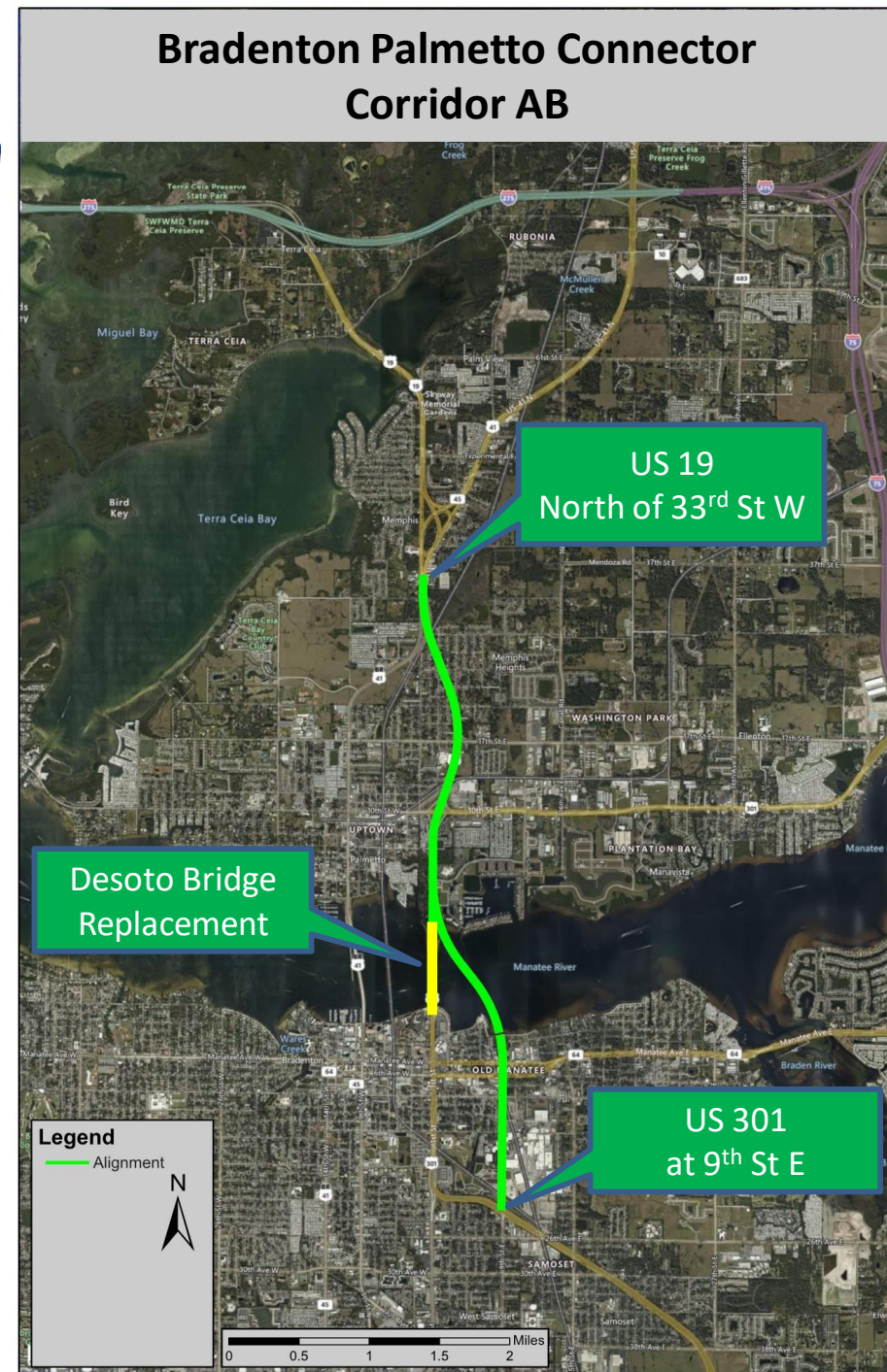
Florida Department of Transportation



Preliminary Corridors

Corridor AB

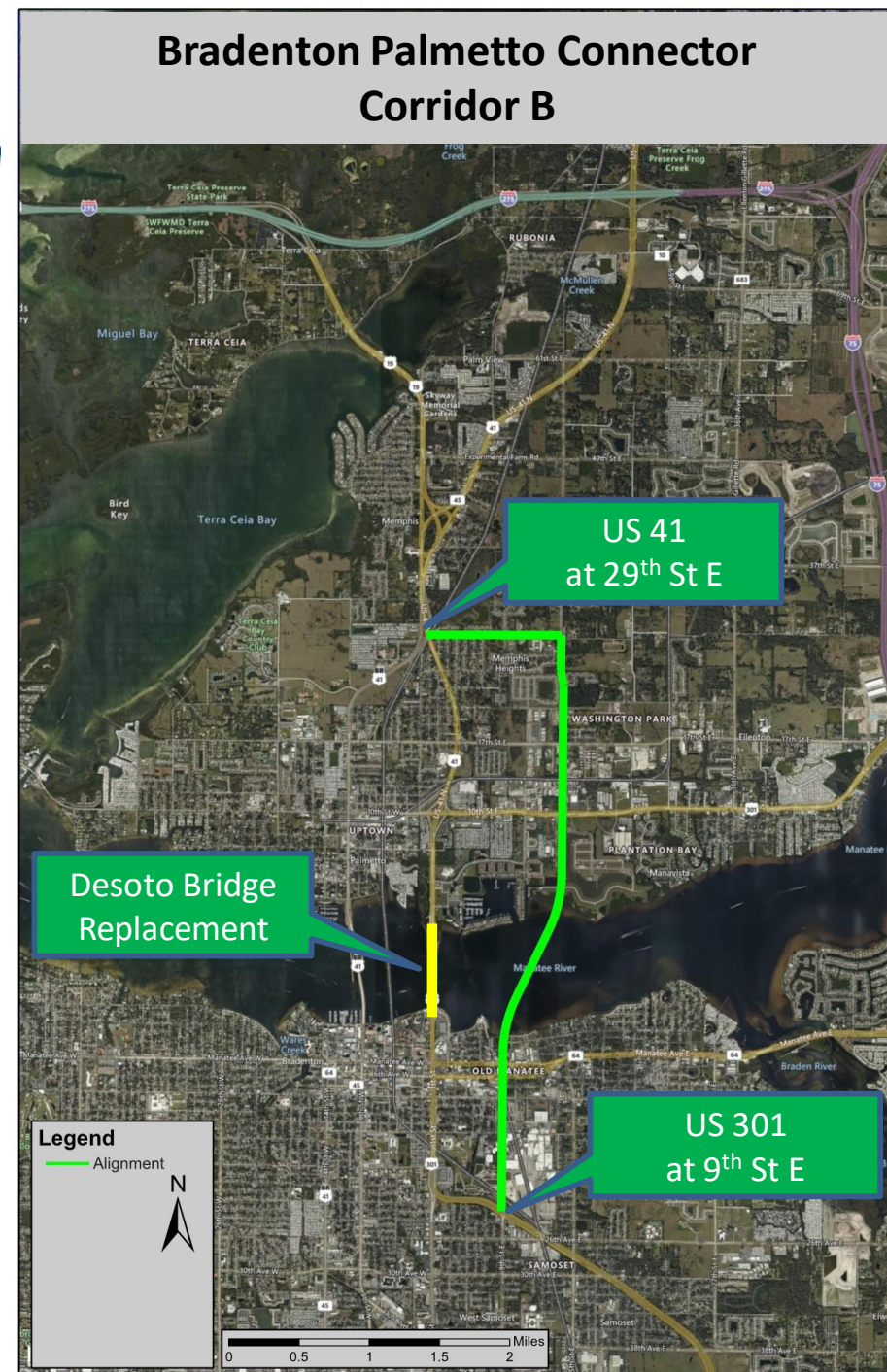
- From **US 19 north of 33rd St W** to **US 301 at 9th St E**
- Desoto Bridge Replacement may be included in this improvement



Preliminary Corridors

Corridor B

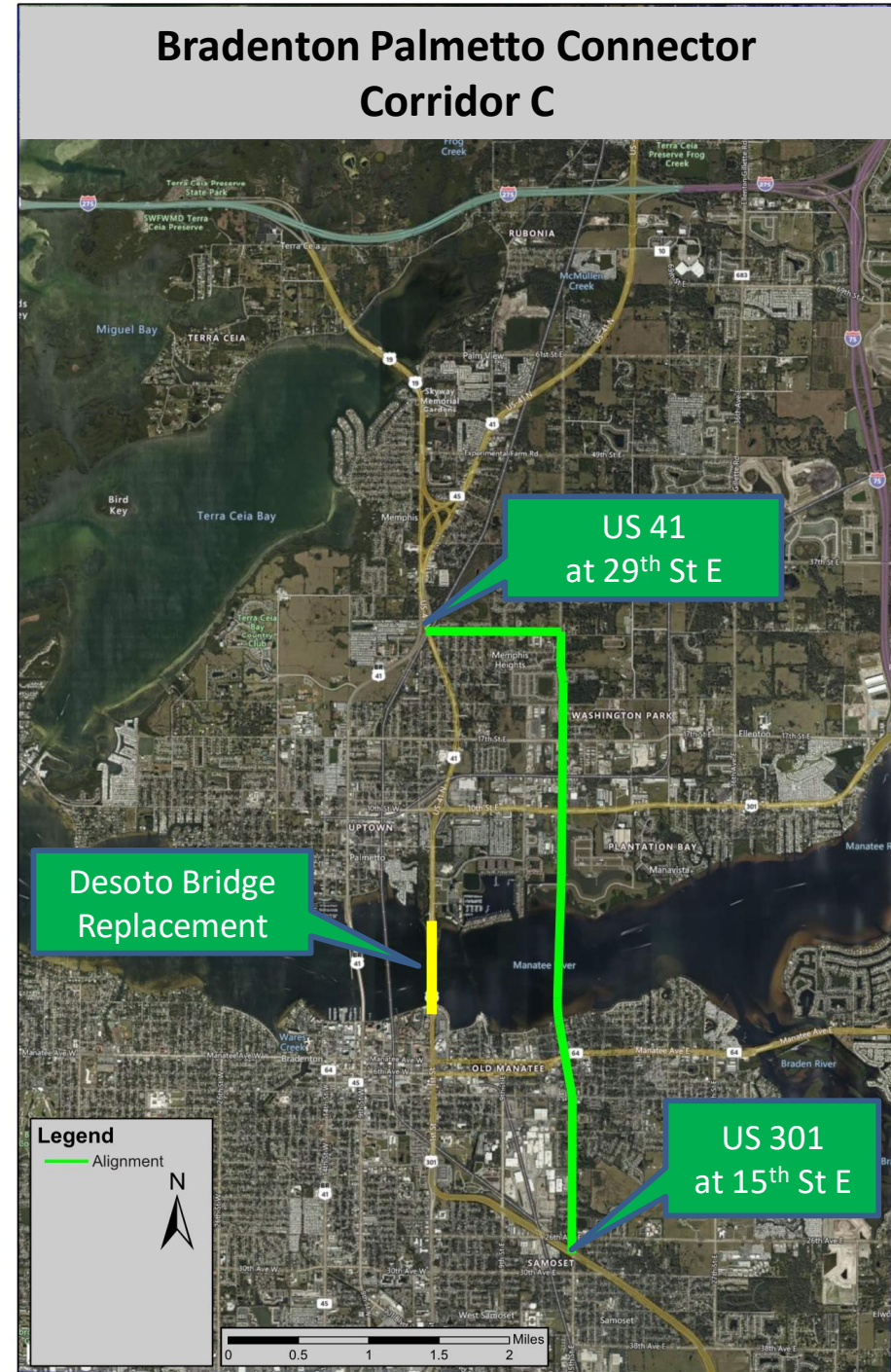
- From **US 41 at 29th St E** to **16th Ave E** to **US 301 at 9th St E**
- Desoto Bridge Replacement is a separate project



Preliminary Corridors

Corridor C

- From **US 41 at 29th St E** to **16th Ave E** to **US 301 at 15th St E**
- Desoto Bridge Replacement is a separate project



Preliminary Corridors

Corridor D

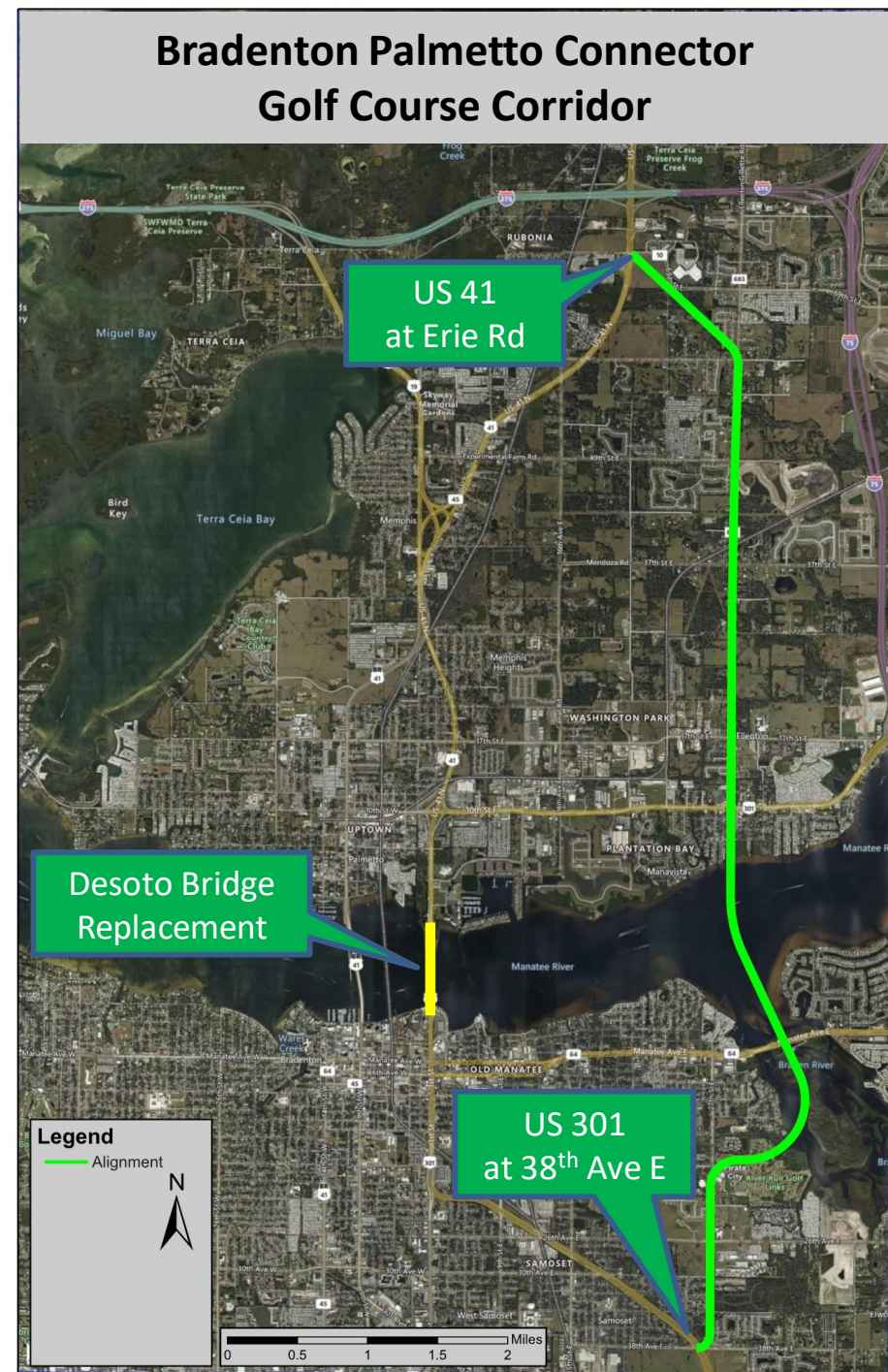
- From **Moccasin Wallow Rd at Ellenton Gillette Rd to US 301 at 38th Ave E**
- Desoto Bridge Replacement is a separate project



Preliminary Corridors

Golf Course Corridor

- From **US 41 at Erie Rd** to **Ellenton Gillette Rd to US 301 at 38th Ave E**
- Desoto Bridge Replacement is a separate project



Environmental Data Gathering

Sociocultural Resources

Community Demographics	Historic Sites & Districts
Cemeteries	Parks & Recreation
Hospitals	Trails (incl. paddling)
Churches/Religious Centers	Conservations Lands
Schools	

Natural Resources

Wildlife/Species	Wetlands
------------------	----------

Physical Resources

Contamination Sites	Brownfields
---------------------	-------------

Public Engagement

- Upcoming Updates to Public Officials:

Meeting	Date
Sarasota Manatee MPO Chamber Retreat	9/13/19
Sarasota Manatee MPO Board Meeting	9/23/19
City of Palmetto City Council Meeting	10/7/19
Manatee County Board of County Commissioners	10/8/19
City of Bradenton	10/9/19

** Phone update to Representative Wengay Newton 9/25/19*

Public Engagement

- Identify/Confirm Stakeholders:
 - Community Leaders
 - HOA's/Community Organizations
 - Business Owners
 - Emergency Services
 - Transit
 - Freight & Rail
 - Airports and Ports

Bradenton-Palmetto Connector Study

Project Schedule

November 2019 – Advertise for Consultant

February 2020 – Select Consultant

May 2020 – Execute Study Contract



Contact Information

Jennifer Marshall, PE

PD&E Project Manager

Jennifer.marshall@dot.state.fl.us

(863) 519-2239