

# Riviera Dunes Master Association

## Bridge Committee Meeting Packet

January 21, 2020

### Members:

*Shay Hawkinberry – Chair	<a href="mailto:gcpqshay@yahoo.com">gcpqshay@yahoo.com</a>	Commercial
Fred Sperry – Vice Chair	<a href="mailto:jfredsperry@gmail.com">jfredsperry@gmail.com</a>	Bel Mare
Jim Bailie	<a href="mailto:jamesbailie@rocketmail.com">jamesbailie@rocketmail.com</a>	Laguna
*Bob Crowley	<a href="mailto:wastintimetwo@gmail.com">wastintimetwo@gmail.com</a>	Marina
*Rob Hartwell	<a href="mailto:rob@hartwellcapitolconsulting.com">rob@hartwellcapitolconsulting.com</a>	Hammocks
Bill Horton	<a href="mailto:bjh118@aol.com">bjh118@aol.com</a>	Bel Mare
Gino Kauzlarich	<a href="mailto:ginok@merchantservice.com">ginok@merchantservice.com</a>	Homes
John Ollsen	<a href="mailto:john.ollsen2014@gmail.com">john.ollsen2014@gmail.com</a>	Bel Mare
(Open)		Laguna
*Master Association Board		

### Agenda:

- Review CMNAA Final Study & 2020 Elected Officials & MPO
- Update of Bradenton – Palmetto Connector PD&E Study
- Review the six Corridor Alternatives being evaluated by FDOT
- Develop Strategy to minimize impact on Riviera Dunes Community
- Recommend Action Plan for 2020
- Adjourn

# 2020 Local Elected Officials

Yellow = MPO Board Members

## Manatee County

## Term

### Expires

P. O. Box 1000, Bradenton, FL 34206-1000  
1112 Manatee Avenue West, Bradenton, FL 34205  
Phone: (941) 748-4501

- Cheri Coryea- Administrator

[cheri.coryea@mymanatee.org](mailto:cheri.coryea@mymanatee.org)

### Commissioners

- Priscilla Trace - District 1
- **Reggie Bellamy- District 2**
- Stephen Jonsson – District 3
- **Misty Servia – District 4**
- **Vanessa Baugh – District 5**
- Carol Whitmore – At Large
- **Betsy Benac – At Large- Chair**

[priscilla.trace@mymanatee.org](mailto:priscilla.trace@mymanatee.org)

2020

[reggie.Bellamy@mymanatee.org](mailto:reggie.Bellamy@mymanatee.org)

2022

[steve.jonsson@mymanatee.org](mailto:steve.jonsson@mymanatee.org)

2020

[misty.servia@mymanatee.org](mailto:misty.servia@mymanatee.org)

2022

[vanessa.baugh@mymanatee.org](mailto:vanessa.baugh@mymanatee.org)

2020

[carol.whitmore@mymanatee.org](mailto:carol.whitmore@mymanatee.org)

2022

[betsy.benac@mymanatee.org](mailto:betsy.benac@mymanatee.org)

2020

## City of Bradenton

101 Old Main Street  
Bradenton, FL 34205  
(941) 932-9400

- Wayne H. Poston-Mayor

[wayne.poston@cityofbradenton.com](mailto:wayne.poston@cityofbradenton.com)

2020

### Councilmen

- Gene Gallo – Ward 1 Councilman
- Gene Brown – Ward 2 Councilman
- Patrick Roff – Ward 3 Councilman
- Bill Sanders – Ward 4 Councilman
- Harold Byrd Jr. – Ward 5 Councilman

[gene.gallo@cityofbradenton.com](mailto:gene.gallo@cityofbradenton.com)

2020

[gene.brown@cityofbradenton.com](mailto:gene.brown@cityofbradenton.com)

2020

[patrick.roff@cityofbradenton.com](mailto:patrick.roff@cityofbradenton.com)

2022

[bill.sanders@cityofbradenton.com](mailto:bill.sanders@cityofbradenton.com)

2022

[harold.byrd@cityofbradenton.com](mailto:harold.byrd@cityofbradenton.com)

2020

## City of Palmetto

516 8th Ave. W.  
Palmetto, FL 34221  
Ph: (941) 723-4570

- **Shirley Groover Bryant- Mayor**

[sbryant@palmettofl.org](mailto:sbryant@palmettofl.org)

2020

### Commissioners

- Jonathan Davis – At Large
- Tamara Cornwell – At Large
- Harold Smith – Ward 1
- Tambra Varnadore – Ward 2
- **Brian Williams – Ward 3**

[jdavis@palmettofl.org](mailto:jdavis@palmettofl.org)

2020

[tcornwell@palmettofl.org](mailto:tcornwell@palmettofl.org)

2020

[hsmith@palmettofl.org](mailto:hsmith@palmettofl.org)

2022

[tvarnadore@palmettofl.org](mailto:tvarnadore@palmettofl.org)

2022

[bwilliams@palmettofl.org](mailto:bwilliams@palmettofl.org)

2022

# 2020 MPO BOARD

## *Manatee County*

Commissioner Vanessa Baugh

Commissioner Betsy Benac

Commissioner Misty Servia

## Sarasota County

Commissioner Nancy Detert

Commissioner Alan Maio

Commissioner Christian Ziegler

## City of Bradenton

Councilman Gene Brown

Councilman William Sanders

## City of North Port

Commissioner Vanessa Carusone

Commissioner Pete Emrich

## City of Palmetto

**Mayor Shirley Groover Bryant - 2020 Chair**

## Island Transportation Planning Organization (ITPO)

(Anna Maria, Holmes Beach & Bradenton Beach)

Mayor John Chappie

## Sarasota-Manatee Airport Authority

Commissioner Carlos Beruff

## City of Sarasota

Commissioner Willie Shaw

**Mayor Liz Alpert - 2020 Vice Chair**

## City of Venice

Vice Mayor Chuck Newsom

## Town of Longboat Key

Commissioner Jack Daly

## Florida Department of Transportation District One

Secretary L. K. Nandam

(Non-Voting/Advisory)



# Sarasota/Manatee MPO 2020 Meeting Schedule

JANUARY						
S	M	T	W	T	F	S
			1 H	2	3	4
5	6	7	8	9	10	11
12	13 TAC ITPO CAN	14	15	16	17	18
19	20 H	21	22 MLCB SLCB	23	24	25
26	*27 MPO	28	29	30	31	

\*Joint Meeting with Charlotte County-Punta Gorda MPO

FEBRUARY						
S	M	T	W	T	F	S
						1
2	3	4	5	6	7	8
9	10	11	12	13	14	15
16	17 H	18	19	20	21	22
23	24 MPO BPTAC TAC CAN LRTP	25 MAP-21 Safety Targets Due	26	27	28	29

\*MPO Board Workshop

MARCH						
S	M	T	W	T	F	S
1	2	3	4	5	6	7
8	9 BPTAC TAC ITPO CAN	10	11	12	13	14
15	16	17	18	19	20	21
22	23 PTTF MPO	24	25	26	27	28
29	30	31				

APRIL						
S	M	T	W	T	F	S
			1	2	3	4
5	6	7	8	9	10	11
12	13	14	15	16	17	18
19	20 MPO BPTAC TAC CAN LRTP	21	22	23	24	25
26	27	28	29	30		

\* MPO Board Workshop

MAY						
S	M	T	W	T	F	S
						1
3	4 BPTAC TAC ITPO CAN	5	6	7	8	9
10	11	12	13 MLCB SLCB	14	15	16
17	18 PTTF MPO	19	20	21	22	23
24	25 H	26	27	28	29	30
31						

JUNE						
S	M	T	W	T	F	S
	1	2	3	4	5	6
7	8	9	10	11	12	13
14	15	16	17	18	19	20
21	22	23	24	25	26	27
28	29	30				

NO MPO Board, BPTAC, TAC, and CAN meetings in June.

JULY						
S	M	T	W	T	F	S
			1	2	3 H	4
5	6	7	8	9	10	11
12	13	14	15	16	17	18
19	20	21	22	23	24	25
26	27	28	29	30	31	

NO MPO Board, BPTAC, TAC, and CAN meetings in July.

AUGUST						
S	M	T	W	T	F	S
						1
2	3	4	5	6	7	8
9	10	11	12	13	14	15
16	17	18	19	20	21	22
23	24 BITS	25	26	27	28	29
30						

NO MPO Board, BPTAC, TAC, and CAN meetings in August.

SEPTEMBER						
S	M	T	W	T	F	S
		1	2	3	4	5
6	7 H	8	9	10	11	12
13	14 BPTAC TAC ITPO CAN	15	16 MLCB SLCB	17	18	19
20	21 PTTF MPO	22	23	24	25	26
27	28	29	30			

OCTOBER						
S	M	T	W	T	F	S
				1	2	3
4	5	6	7	8	9	10
11	12 BPTAC TAC ITPO CAN	13	14	15	16	17
18	19	20	21	22	23	24
25	26 PTTF MPO	27	28	29	30	31

NOVEMBER						
S	M	T	W	T	F	S
1	2	3	4	5	6	7
8	9	10	11 H	12	13	14
15	16	17	18 MLCB SLCB	19	20 MAP-21 Mobility Targets Due	21
22	23	24	25	26 H	27 H	28
29	30					

NO MPO Board, BPTAC, TAC and CAN meetings in November

DECEMBER						
S	M	T	W	T	F	S
		1	2	3	4	5
6	**7 BPTAC TAC ITPO CAN	8	9	10	11	12
13	14	15	16	17	18	19
20	**21 MPO	22	23	24 H	25 H	26
27	28	29	30	31		

Note: \*\*Only If Needed

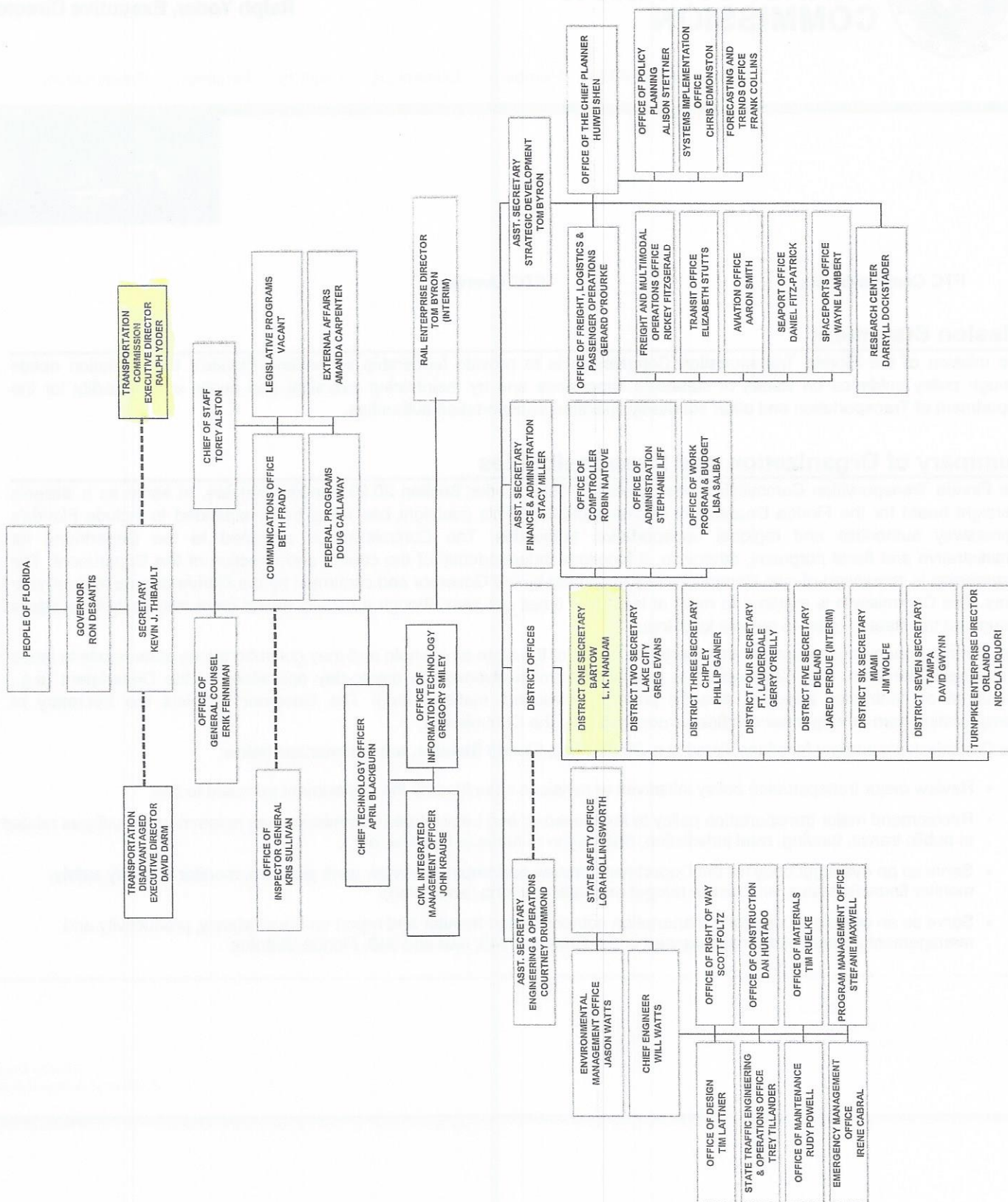
## H - Observed Holidays

MPO - Sarasota/Manatee MPO Board, 9:30 a.m.  
PTTF - Public Transportation Task Force, 8:15 a.m.  
TAC - Technical Advisory Committee, 10:00 a.m.  
CAN - Citizen Advisory Network, 5:00 p.m.

MLCB - Manatee Transportation Disadvantaged Local Coordinating Board, 10:00 a.m.  
SLCB - Sarasota Transportation Disadvantaged Local Coordinating Board, 1:00 p.m.  
BPTAC-Bicycle/Pedestrian/Trails Advisory Committee, 8:00 a.m.  
ITPO- Island Transportation Planning Organization, 2:00 p.m.  
BITS-Barrier Island Traffic Study



## PEOPLE OF FLORIDA





# FLORIDA TRANSPORTATION COMMISSION

Ronald Howse, Chairman  
Ralph Yoder, Executive Director

[Home](#) [About FTC](#) [Members](#) [Contact Us](#) [Reports](#) [Meetings](#) [Presentations](#)

FTC / About Us  
**About Us**



[FTC Commissioners](#)

[FTC Overview](#)

## Mission Statement

The mission of the Florida Transportation Commission is to provide leadership in meeting Florida's transportation needs through policy guidance on issues of statewide importance and by maintaining oversight and public accountability for the Department of Transportation and other statutorily specified transportation authorities.

## Summary of Organization and Responsibilities

The Florida Transportation Commission was created in 1987, under Section 20.23, Florida Statutes, to serve as a citizen's oversight board for the Florida Department of Transportation. This oversight has since been expanded to include Florida's expressway authorities and regional transportation authorities. The Commission is assigned to the Department for administrative and fiscal purposes; otherwise, it functions independently of the control and direction of the Department. The Commission is composed of nine Commissioners appointed by the Governor and confirmed by the Florida Senate for four-year terms. The Commission is required to meet at least four times per year; though it usually meets more frequently in locations throughout the state in order to receive local input.

The Commissioners must represent transportation needs of the state as a whole and may not subordinate state needs to those of any particular area. The Commission is prohibited from involvement in day-to-day operations of the Department (e.g., consultant or contractor selection, specific projects, personnel matters, etc.). The Governor appoints the Secretary of Transportation from among three candidates nominated by the Commission.

The Commission's primary functions, listed in s. 20.23(2)(b), [Florida Statutes](#), are summarized below:

- Review major transportation policy initiatives or revisions submitted by the Department pursuant to law.
- Recommend major transportation policy to the Governor and Legislature (Commission has recommended policies related to public transit, funding, road jurisdiction, distribution of funds to Districts, etc.).
- Serve as an oversight body for the Department ([review performance](#), [review work program](#), [monitor highway safety](#), monitor financial status, and review budget requests and long-range plan).
- Serve as an oversight body for transportation authorities and [monitor and report](#) on the efficiency, productivity and management of those authorities created under Chapters 343, 348 and 349, Florida Statutes.

Florida Transportation Commission  
605 Suwannee Street, Mail Station 9  
Tallahassee, FL 32399  
Tel: 850-414-4105  
Fax: 850-414-4234

[Privacy Policy](#)  
[Download Adobe Reader](#)



## Public Feedback: Long-Term Capacity

To gauge public opinion for providing long-term capacity over the Manatee River, questions were included in both the Public Meeting survey as well as the Online Feedback Survey. The public was asked if they agreed that there will be a future need for additional capacity over the Manatee River. The public was also asked their preference regarding the long-term capacity alternatives developed during the CMNAA study.

The following tables and associated charts provide a tally of the combined responses from all public meeting surveys and online feedback surveys that were received for the two questions associated with the long-term capacity alternatives. The majority (497 out of 521) of responders agreed that there is a long-term need for additional vehicular capacity. Of those 497 responders, there were 266 who preferred providing that additional capacity by widening 1st Street / US 41 and the Desoto Bridge.

When surveyed on which of the long-term capacity alternatives developed as part of this CMNAA study were supported, 318 support the Golf Course alternative, with a close second for Desoto Bridge Replacement (widening to six lanes) with 316 votes. Alternative D (Widened At-Grade) was third with 272 votes.

### Question 1: Do you agree with the long-term need for additional vehicular capacity across the Manatee River?

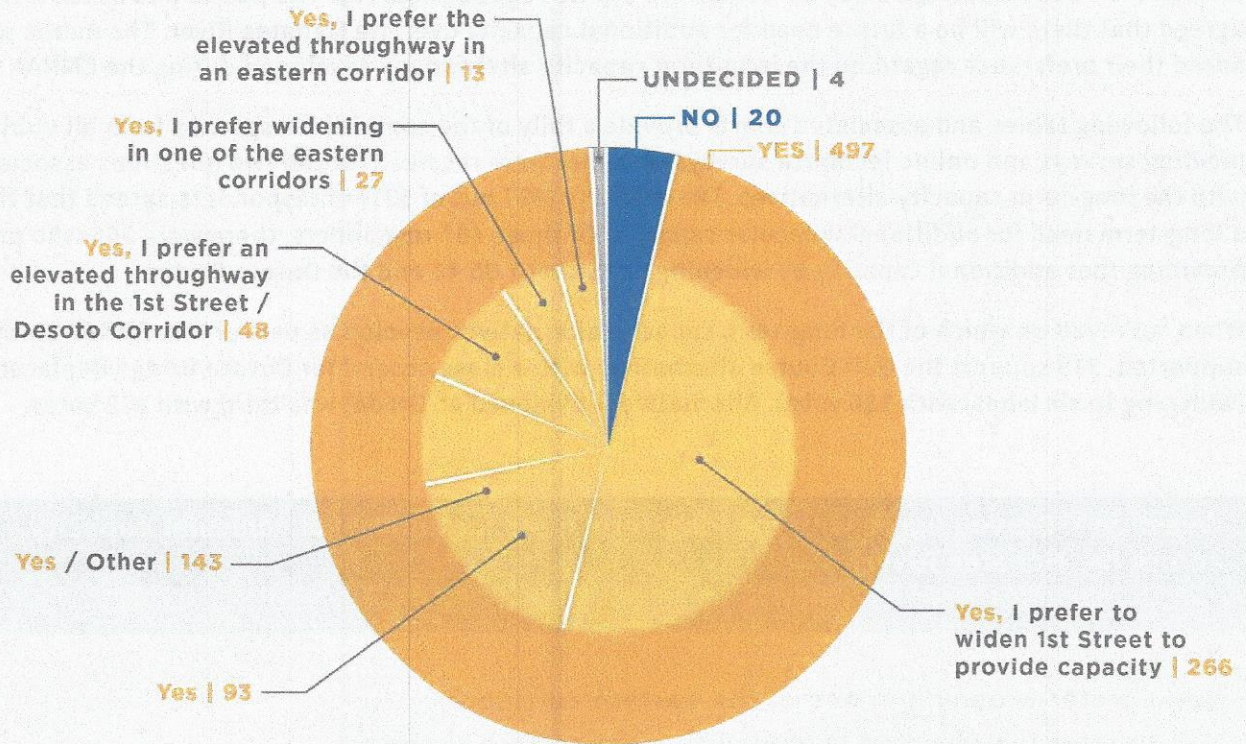
Answer	Total
No	20
Yes, I prefer widening in one of the eastern corridors	27
Yes, I prefer the elevated throughway in an eastern corridor	13
Yes, I prefer an elevated throughway in the 1st Street / Desoto Corridor	48
Yes, I prefer to widen 1st Street to provide capacity	266
Yes / Other	143
Undecided	4

### Question 2: Of the options presented and evaluated, which option(s) would you support?

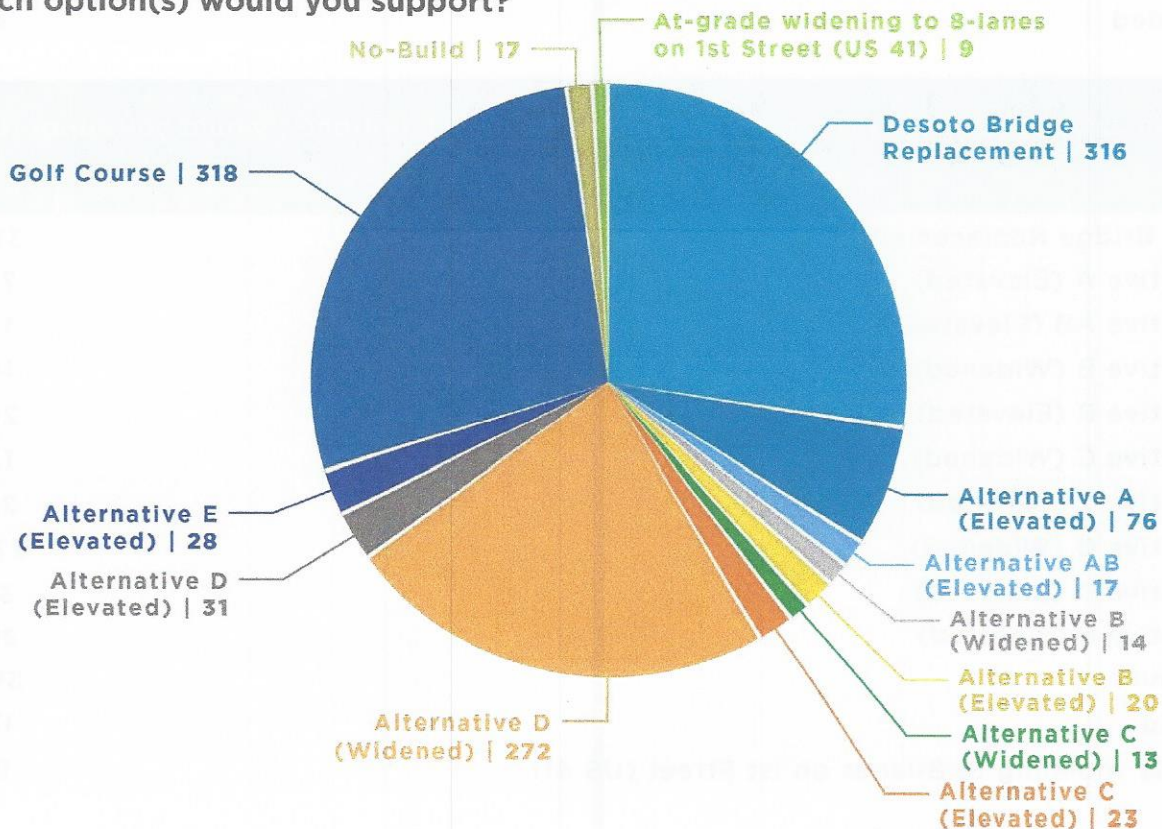
Answer	Total
Desoto Bridge Replacement	316
Alternative A (Elevated)	76
Alternative AB (Elevated)	17
Alternative B (Widened)	14
Alternative B (Elevated)	20
Alternative C (Widened)	13
Alternative C (Elevated)	23
Alternative D (Widened)	272
Alternative D (Elevated)	31
Alternative E (Elevated)	28
Golf Course	318
No-Build	17
At-grade widening to 8-lanes on 1st Street (US 41)	9



Question 1: **Do you agree with the long-term need for additional vehicular capacity across the Manatee River?**



Question 2: **Of the options presented and evaluated, which option(s) would you support?**







Florida Department of  
**TRANSPORTATION**

# **Bradenton Palmetto Connector Fall 2019 Update**

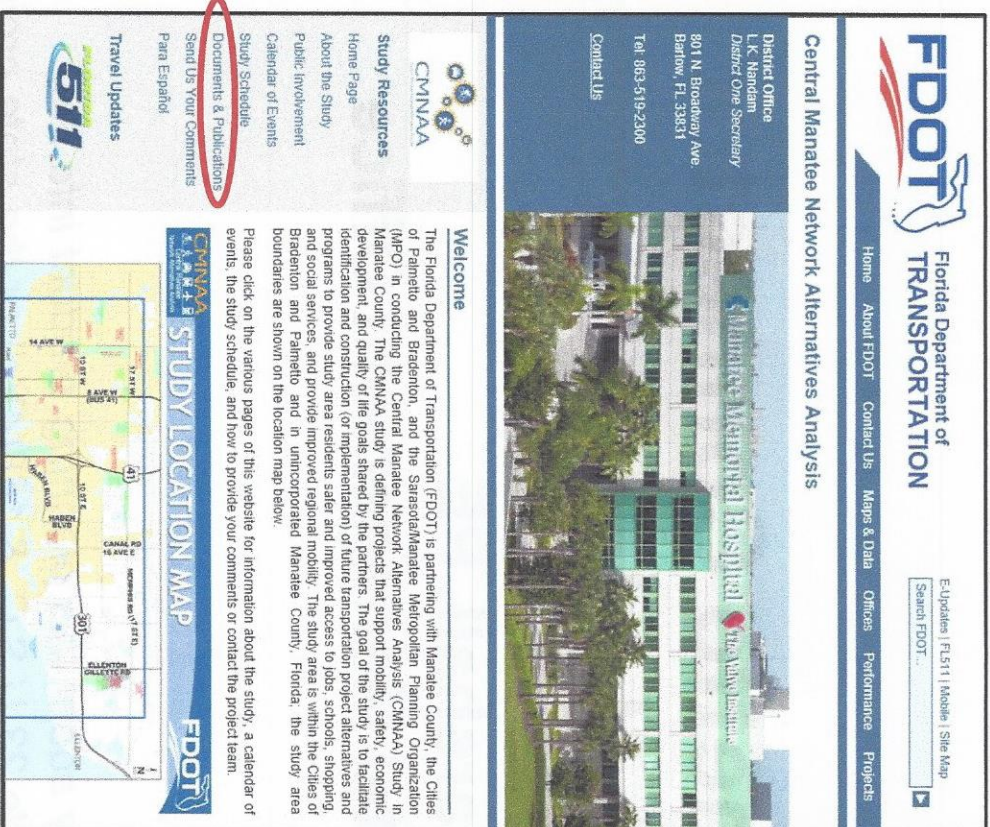
**Jennifer Marshall, PE  
District 1 Environmental Management Office**

*The Florida Department of Transportation may adopt this planning product into the environmental review process, pursuant to Title 23 U.S.C. § 168(4)(d) or the state project development process.*



# Central Manatee Network Analysis

- Finalized and posted to website May 2019



*Project website:*

[www.swflroads.com/study/CMNAA/](http://www.swflroads.com/study/CMNAA/)



*Link to document:*

[Documents & Publications](#)



Florida Department of Transportation



# Central Manatee Network Analysis

- Finalized and posted to website May 2019

**FDOT** Florida Department of TRANSPORTATION

Home About FDOT Contact Us Maps & Data Offices Performance Projects

E-Updates | FL511 | Mobile | Site Map

Search FDOT...

### Central Manatee Network Alternatives Analysis

**District Office**  
L.K. Nandam, P.E.  
District One Secretary  
801 N. Broadway Ave.  
Barrow, FL 33831  
Tel. 883-519-2300  
Contact Us

**MANATEE COUNTY COURTHOUSE**

**Study Resources**

- Home Page
- About the Study
- Public Involvement
- Calendar of Events
- Study Schedule
- Documents & Publications
- Send Us Your Comments
- Para Español

**Travel Updates**

**511**

**Summary of Findings**

- CMNAA Travel Time Reliability Study, January 2017
- CMNAA GIS Map Book, Updated May 2017
- Manatee River Crossing Alternatives - Environmental Screening Tool Preliminary Findings, April 2017
- CMNAA O-D Study Technical Memorandum, June 2017
- Existing (2017) Operational Analysis, June 2017 CMNAA Roadway Safety Assessments
- 14th Street (US 41 Business) Roadway Safety Assessment, September 2017
- 8th Avenue (Dr. Martin Luther King Jr. Avenue) Roadway Safety Assessment, October 2017
- 8th Street (US 41 Business) Roadway Safety Assessment, November 2017
- 6th Avenue (SR 64 Eastbound) Roadway Safety Assessment, January 2018
- 8th Avenue (US 41 Business) Roadway Safety Assessment, February 2018
- Manatee Avenue (SR 64 Westbound) Roadway Safety Assessment, February 2018
- US 41 Roadway Safety Assessment, February 2018
- Transit Alternatives Technical Memorandum, December 2017
- Short-Term (2028) Operational Analysis, December 2017
- Use of the District One Regional Model (2010-2040) and Sub-Area Refinement Report, October 2017
- CMNAA Bicycle System Plan, February 2018

**Project website:**

[www.swflroads.com/study/CMNAA/](http://www.swflroads.com/study/CMNAA/)



**Link to document:**  
Documents & Publications



**Primary Document:**  
Summary of Findings



# Central Manatee Network Analysis

- Projects Recommended:

Financial ID	Project Name	Fiscal Year
442630-1	DeSoto Bridge Replacement Study	2022/2023
444807-1	Traffic Operations Improvements in Downtown Bradenton	2019/2020
444843-1	Bradenton Palmetto Connector Study	2019/2020
444857-1	Palmetto Trails Network Study	2019/2020





# Bradenton-Palmetto Connector Study

---

- **Phase 1: Alternative Corridor Evaluation (ACE)**
  - PD&E Manual, Part 1, Chapter 4
  - Evaluate all **corridors** from the Central Manatee Study
  - May incorporate new **corridors**
  - Will recommend 2-3 **corridors** to move into PD&E study phase
- **Phase 2: Project Development & Environment (PD&E Study)**
  - Detailed evaluation of **alignment alternatives located within the corridors** recommended from ACE
  - Will recommend one preferred alignment alternative to move into design phase

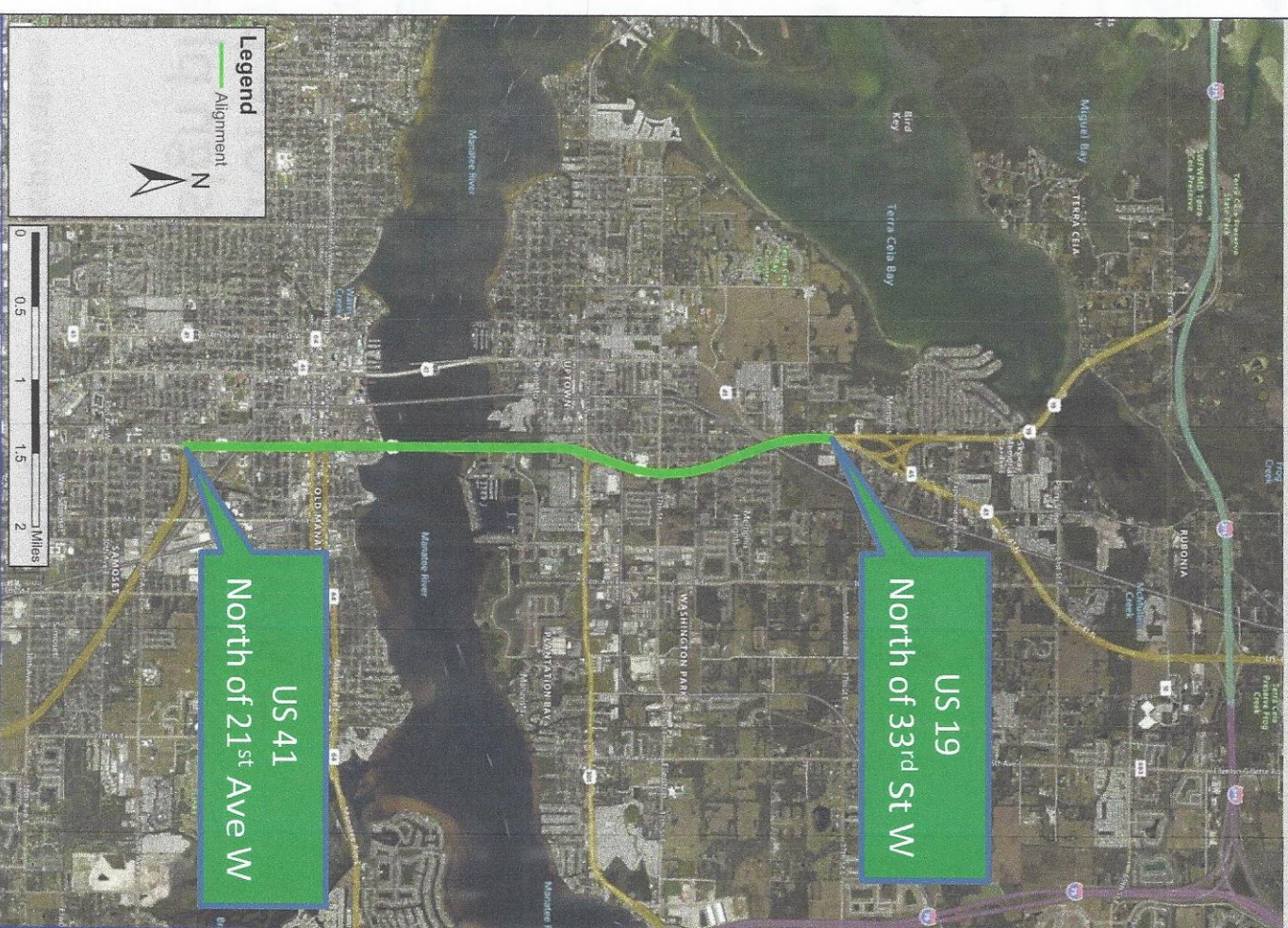


# Preliminary Corridors

## Corridor A

- From **US 19 north of 33<sup>rd</sup> St W** to **US 41 north of 21<sup>st</sup> Ave W**
- DeSoto Bridge included in the corridor

## Bradenton Palmetto Connector Corridor A



Florida Department of Transportation

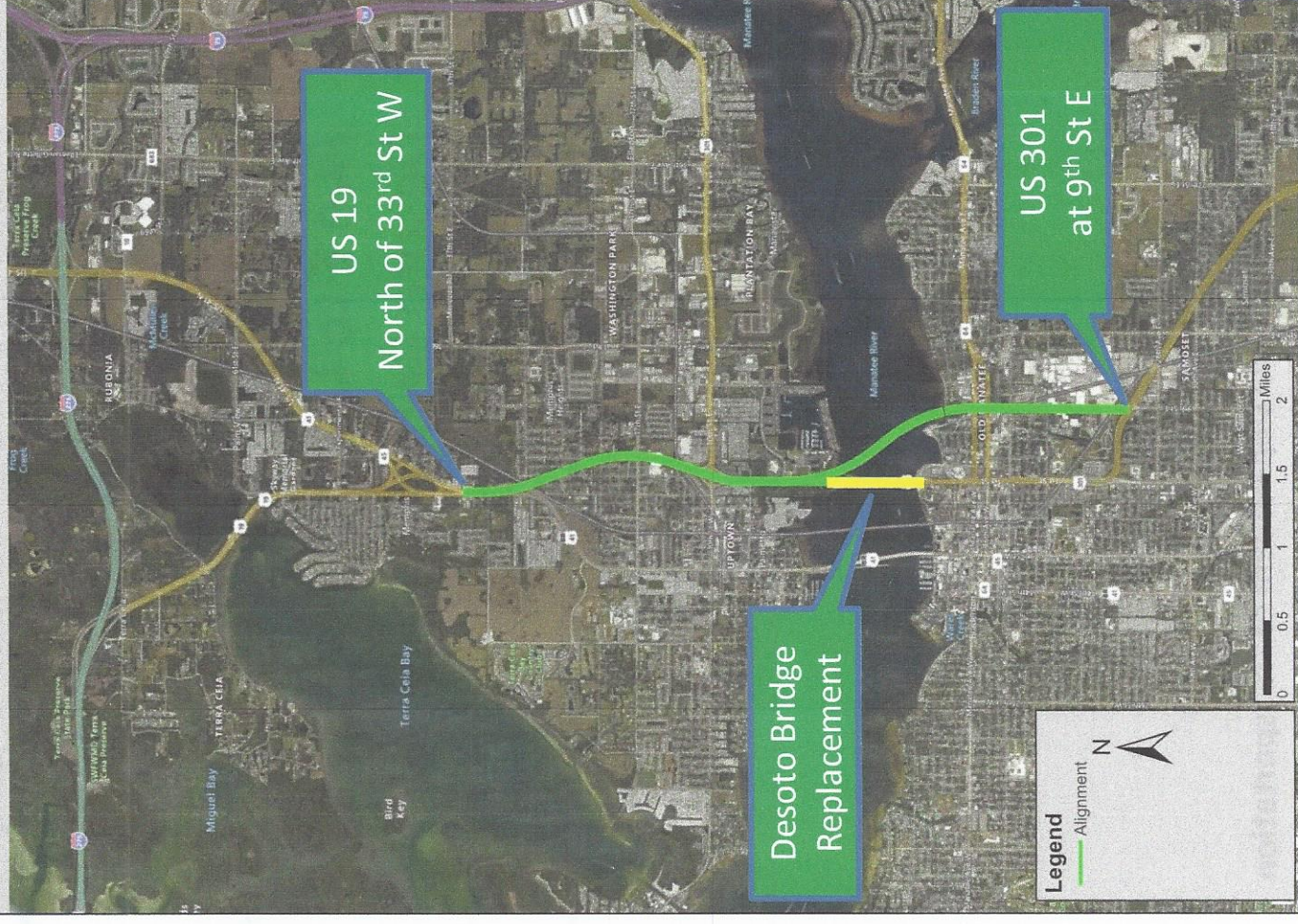


# Preliminary Corridors

## Corridor AB

- From **US 19 north of 33<sup>rd</sup> St W** to **US 301 at 9<sup>th</sup> St E**
- Desoto Bridge Replacement may be included in this improvement

## Bradenton Palmetto Connector Corridor AB





- From **US 41 at 29<sup>th</sup> St E to 16<sup>th</sup> Ave E to US 301 at 9<sup>th</sup> St E**
- Desoto Bridge Replacement is a separate project



Florida Department of Transportation

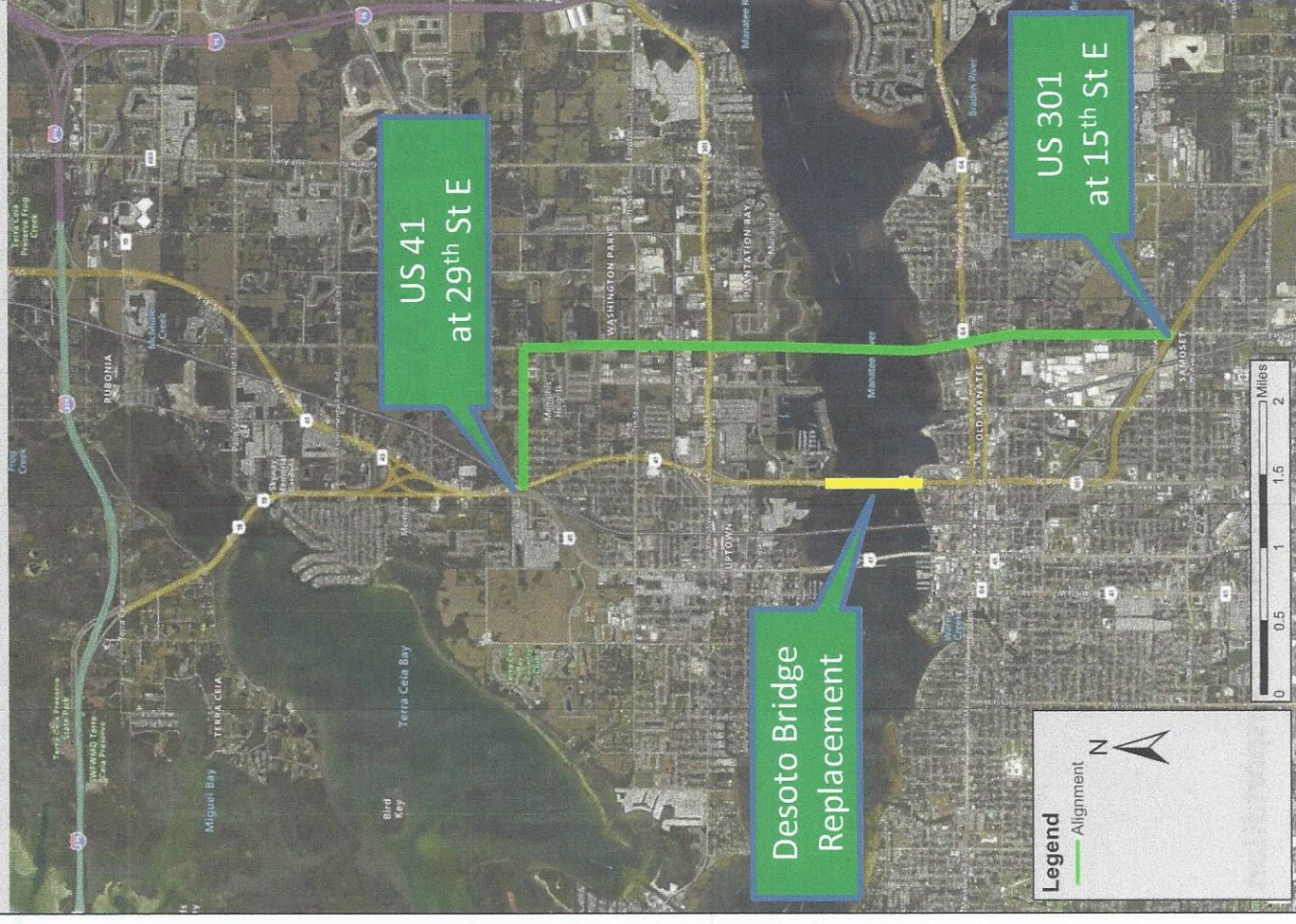


# Preliminary Corridors

## Corridor C

- From **US 41 at 29<sup>th</sup> St E** to **16<sup>th</sup> Ave E** to **US 301 at 15<sup>th</sup> St E**
- Desoto Bridge Replacement is a separate project

## Bradenton Palmetto Connector Corridor C





# Preliminary Corridors

## Corridor D

- From Moccasin Wallow Rd at Ellenton Gillette Rd to US 301 at 38<sup>th</sup> Ave E
- Desoto Bridge Replacement is a separate project



Florida Department of Transportation

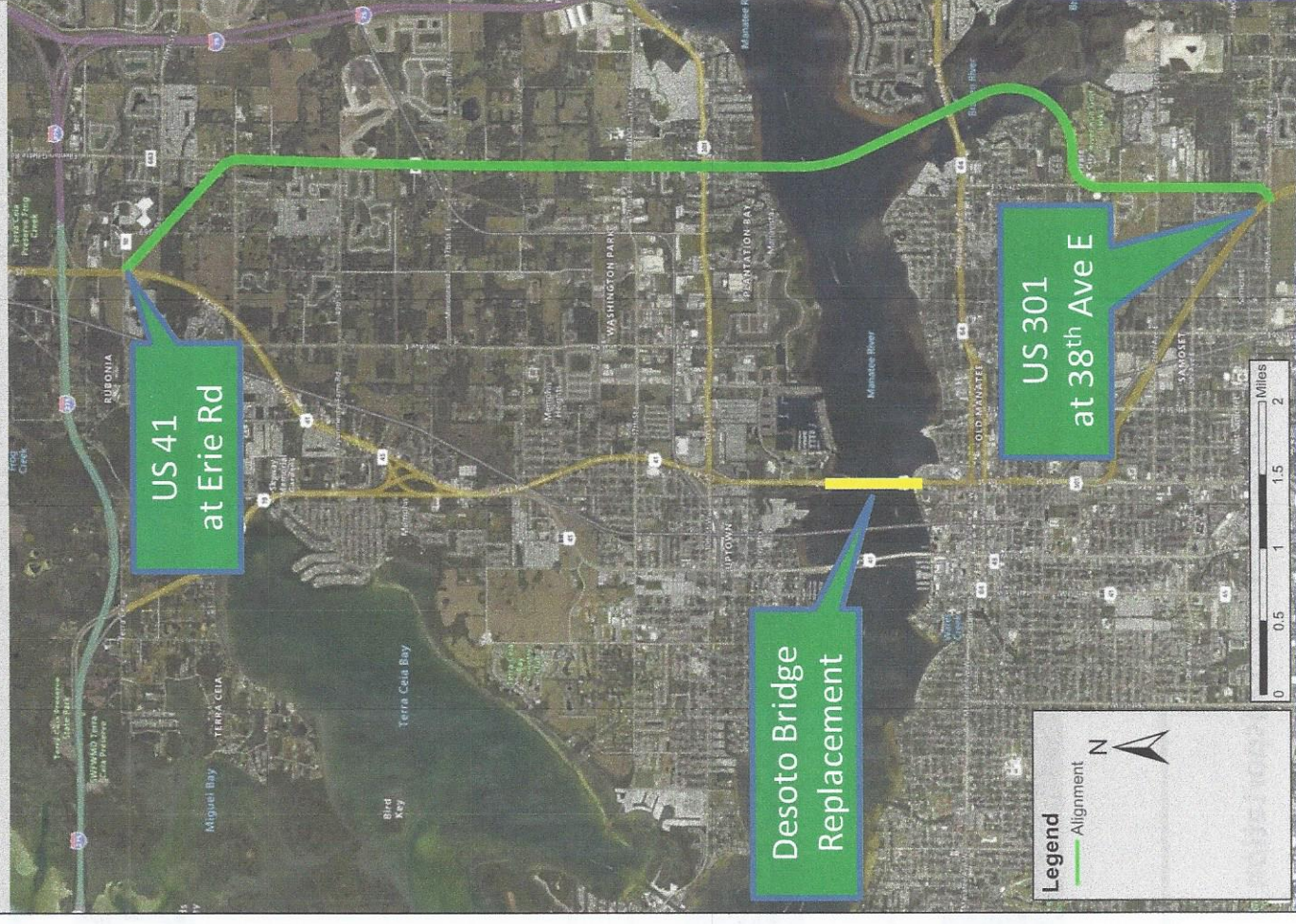


# Preliminary Corridors

## Golf Course Corridor

- From **US 41 at Erie Rd** to **Ellenton Gillette Rd to US 301 at 38<sup>th</sup> Ave E**
- Desoto Bridge Replacement is a separate project

## Bradenton Palmetto Connector Golf Course Corridor





# Environmental Data Gathering

## Sociocultural Resources

Community Demographics	Historic Sites & Districts
Cemeteries	Parks & Recreation
Hospitals	Trails (incl. paddling)
Churches/Religious Centers	Conservations Lands
Schools	

## Natural Resources

Wildlife/Species	Wetlands
------------------	----------

## Physical Resources

Contamination Sites	Brownfields
---------------------	-------------



Florida Department of Transportation



# Public Engagement

---

- Upcoming Updates to Public Officials:

Meeting	Date
Sarasota Manatee MPO Chamber Retreat	9/13/19
Sarasota Manatee MPO Board Meeting	9/23/19
City of Palmetto City Council Meeting	10/7/19
Manatee County Board of County Commissioners	10/8/19
City of Bradenton	10/9/19

*\* Phone update to Representative Wengay Newton 9/25/19*



Florida Department of Transportation



# Public Engagement

---

- Identify/Confirm Stakeholders:
  - Community Leaders
  - HOA's/Community Organizations
  - Business Owners
  - Emergency Services
  - Transit
  - Freight & Rail
  - Airports and Ports





# Bradenton-Palmetto Connector Study

---

## Project Schedule

November 2019 – Advertise for Consultant

February 2020 – Select Consultant

May 2020 – Execute Study Contract



# Contact Information

---

Jennifer Marshall, PE

PD&E Project Manager

[Jennifer.marshall@dot.state.fl.us](mailto:Jennifer.marshall@dot.state.fl.us)

(863) 519-2239



Florida Department of Transportation



Similar to the 9th Street alternates, several challenges are present in the 15th Street E corridor south of the river. Significant historic and cultural resources along the corridor include the Manatee Burying Ground, Manatee Village Historic Park, and the John R. Graham House.



Figure 48: Alternative C – At-Grade Widening Typical Section

### Alternative D – Elevated Throughway

Alternative D – Elevated Throughway entails constructing a four-lane elevated throughway within the existing 27th Street E (in Bradenton) and 36th Avenue E / Ellenton-Gillette Road (in Palmetto). The Desoto Bridge would also be replaced. From US 301 in Bradenton to north of US 301 in Palmetto, 27th Street and 36th Avenue E / Ellenton-Gillette Road would be widened to add a median with piers for the four-lane elevated throughway above (see Figure 49). The elevated throughway would then drop down to the local lanes north of US 301 with a widening of 36th Avenue E / Ellenton-Gillette Road from two to four lanes. A bridge carrying the elevated throughway over the Manatee River would be constructed to connect 27th Street E and 36th Avenue E. Access to elevated throughway, south of 17th Street, would be limited to US 301 in Palmetto, and US 301 in Bradenton, or as identified in the future PD&E Study.

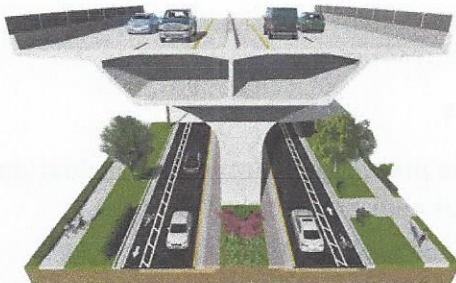


Figure 49: Alternative D – Elevated Throughway Typical Section

Challenges are also present in the 27th Street E corridor south of the river. 27th Street E functions as a two-lane local road with single family residences fronting the road. Additionally, located near the alignment of the proposed bridge is the Historic Braden Castle, a property listed on the National Register of Historic Places, and the Braden Castle community. Therefore, diversion of additional traffic to this roadway would impact the adjacent residents and historical resources.

### Alternative D – At-Grade Widening

Alternative D – At-Grade Widening entails constructing a new bridge connecting 36th Avenue E / Ellenton-Gillette Road on the north side of the river to 27th Street E on the south side of the river. The Desoto Bridge would also be replaced. Widening from two to four lanes would be required for 27th Street E from US 301 in Bradenton to the new bridge crossing and for 36th Avenue E / Ellenton-Gillette Road from the new bridge crossing to Moccasin Wallow Road (see Figure 50).



Figure 50: Alternative D – At-Grade Widening Typical Section

Several challenges are present in the 27th Street E corridor south of the river. 27th Street E functions as a two-lane local road with single family residences fronting the road. Additionally, located within the alignment of the proposed bridge is the Historic Braden Castle, a property listed on the National Register of Historic Places, and the Braden Castle community. Diversion and additional traffic on a widened roadway would impact the adjacent residents and historical resources.



## Golf Course Alternative

The Golf Course Alternative entails constructing a new bridge connecting to 36th Avenue E / Ellenton-Gillette Road on the north side of the river and the 27th Street E corridor south of the river. The Desoto Bridge would also be replaced. The alignment of the new bridge would bypass the neighborhoods and historic resources in the northern part of the 27th Street corridor, by curving to the east, generally along the Braden River, and connecting to 27th Street E at 16th Avenue Drive E. Between the new river crossing and 17th Street, 36th Avenue E would be reconstructed to include a median with piers to support an elevated throughway above. North of 17th Street, it would connect back to at-grade along 36th Avenue E / Ellenton-Gillette Road. 36th Avenue E / Ellenton-Gillette Road north of 17th Street would be widened to accommodate four at-grade lanes from this point north to Palm View Road, where a new at-grade link would be constructed to northwesterly connect with US 41. 27th Street E in Bradenton would also need to be widened from two to four lanes between US 301 and 16th Avenue Drive E (see Figures 51 and 52).

Several challenges are present in the corridor proposed for the Golf Course Alternative. Although this alignment avoids the residential neighborhoods and historic resources present in the northern portion of the 27th Street corridor, the proposed alignment would impact environmental and recreational resources, most notably the Pine Island Preserve and the City of Bradenton's River Run Golf Links.

## Bridge Evaluation

Each bridge alternative was evaluated in four key areas:

- Vehicular mobility and capacity
- Community cohesion, economic development and physical environment
- Natural environment, social environment, and cultural resources
- Project cost

Table 8 provides a list of the detailed performance measures used in the preliminary alternative evaluation as well as the information for each alternative. Details about the various environmental parameters included in evaluation matrix are available in the [Manatee River Crossings Alternatives: Environmental Screening Tool Preliminary Findings](#) on record with the Department. It is recommended that all long-term bridge alternatives be carried forward to the Project Development & Environment (PD&E) study planned for fiscal year 2020.



Figure 51: Golf Course Alternative Typical Section



Figure 52: Golf Course Alternative Renderings

Above: Bridge over Braden River near the golf course looking northeast;  
Below: Grade separation over SR 64 looking southwest



**The CMNAA 2040 projections had the 10 Lane Flyover actually reducing I-75 Traffic.** Since that time numerous other projects have the potential of reducing the need to perhaps a 6 Lane at-grade roadway. These include:

- Near Term improvements in Downtown Bradenton.
- I-75 Interchange Improvements at Hwy 70, Hwy 64 and Hwy 301.
- New I-75 Bridges at Hwy 301 designed to accommodate 10 lanes.
- Potential for Toll Express Lanes along I-75.
- Growth Projections for Manatee County showing majority of growth in the Eastern portion of the County bringing need for Fort Hamer Bridge expansion.
- Three New Toll Corridors introduced last Spring that will reduce traffic on I-75 by 2030.
  - Extension of Suncoast Parkway from Citrus County to Georgia Line.
  - Connector between Florida Turnpike and Suncoast Parkway.
  - New road from Polk County to Collier County.





## Language from PD&E Manual, Part 1, ACE EVALUATION

Alternative Corridor Evaluation FDOT uses the Alternative Corridor Evaluation (ACE) process to identify, evaluate, and eliminate alternatives on qualifying projects prior to the PD&E phase. The decisions made in an ACE can be used to refine the purpose and need for a project; determine the project area; define general travel modes or corridors (including logical termini); describe general environmental setting for a project; identify preliminary environmental impacts and environmental mitigation; develop and evaluate a range of alternatives to be refined in detail during the PD&E Study; and document elimination of unreasonable alternatives. The ACE process links planning and NEPA. However, adoption and use of ACE decisions in the NEPA process is subject to a determination by OEM. The ACE is typically performed as part of the ETDM screening efforts that precede the PD&E phase. Alternatives should support the purpose and need for a project in accordance with all applicable laws and regulations, through the balancing of engineering, environmental, and economic aspects while considering comments received through the Programming Screen. The Districts should use the ACE process to support potential EIS and certain Environmental Assessment (EA) projects. The ACE process may also be used to eliminate corridors that are part of the State Environmental Impact Report (SEIR) when new alignments are under consideration. Projects that qualify for the ACE process include: 1. New alignments – new roadways; new roadway connections or extensions; 2. Major realignments; 3. Major bypasses – truck bypasses, city/town bypasses; and, 4. Other alignments based on consultation with OEM. Additionally, new alignments or major realignments for freight corridors (that are not bypasses), and bicycle or trail corridors may be evaluated using the ACE process. Topic No. 650-000-001 Project Development and Environment Manual Project Development Process Effective: January 14, 2019 Project Development Process 4-13 The FDOT process for early planning and evaluation of transit projects in Florida is documented in the Transit Concept and Alternatives Review (TCAR) Guidance. The TCAR process is a uniform approach for advancing transit projects by linking early planning work to the PD&E and FTA Project Development processes. See Part 1, Chapter 14, Transit Project Delivery, for PD&E guidance on corridor analysis for transit projects. The ACE process identifies and evaluates corridor alternatives using the Methodology Memorandum (MM) agreed upon by the project stakeholders (local, state, tribal and federal agencies). The results of the ACE are documented in the Alternative Corridor Evaluation Report (ACER). The ACER may be used in the NEPA process to support a decision to eliminate corridors from further study that are not feasible or do not meet the purpose and need for the project. Resource agency coordination in the ACE process is accomplished through the ETDM screening process. The ETDM screening facilitates demonstration and documentation that alternatives considered during the ACE process received support from regulatory and resource agencies and affected stakeholders (see ETDM Manual, Topic No. 650-000-002). Public input regarding development of the ACE is received using public meetings and outreach. The level of detail in the analysis of an ACE is higher than that used to prepare a typical planning product, but less than that of a PD&E Study. The ACER must establish and document criteria and the public involvement process used to evaluate and eliminate alternatives that are not feasible or do not meet the purpose and need for the project. Such documentation is essential to incorporate ACER results into the NEPA process. The cover of the ACER must include the public notice stated in Section 4.2.2. The ACE process varies depending on whether it is started in the Planning Screen, or Programming Screen. Chapter 3 and Chapter 4 of the ETDM Manual, Topic No. 650- 000-002 explain how to conduct an ACE during the Planning Screen and Programming Screen, respectively. The following sections summarize the basic steps of the ACE process. 4.2.4.1 Define the Initial Corridors Based on initial data collection effort, the District should identify and



## **(Draft) Objectives**

- No Elevated Highways in Final Solution
- Have Corridors AB, B and C eliminated in ACE Evaluation
- Have Golf Course or Corridor D be selected with six (6) lane replacement of DeSoto Bridge as final solution.

## **(Draft) Strategies**

- Insist on updated traffic forecast including FDOT identified improvement Projects.
- Leverage Election Year with Current Officials and Candidates to gain support for Riviera Dunes preferred solution
- Communicate the environmental issues with “Elevated Highways” to all Elected Officials.
- Increase communication with Local Elected Officials and add Florida House & Senate representatives and FDOT.
- Aggressively, add to our Community of Opposition



## (Draft) Actions

### **Insist on updated traffic forecast including FDOT identified improvement Projects.**

- Take request directly to FDOT
- Communicate need and correlation to Elected Officials
- 

### **Leverage Election Year with Current Officials and Candidates to gain support for Riviera Dunes preferred solution.**

- Communicate our preferred solution to all Elected officials & Candidates
- Support Challengers where Elected Official is not receptive.
- 

### **Communicate the environmental issues with “Elevated Highways” to all Elected Officials.**

- Develop talking points about Elevated Highways not being consistent with our Comprehensive Plan.
- MPO Meetings in March & May
- City of Palmetto, City of Bradenton and Manatee County presentations
- 

### **Increase communication with Local Elected Officials and add Florida House & Senate representatives and FDOT.**

- Letter campaign with monthly communications.



**Aggressively, add to our Community of Opposition**

1. Seek commitments from all affected Communities
2. Mobile Home Communities
3. Sanctuary Cove
4. Manatee Memorial Hospital
5. Renew alliance with Manatee NAACP (Tarnisha Claitt ??)



Aggressively side to our Community of Opposition  
1. Seek commitments from all affected Communities

2. Mobile Home Communities

3. Sanctuary Cove

4. Manatee Memorial Hospital

5. Renew alliance with Manatee NAACP (Tampa Bay)